

BENNETT HOMES & REALTY

since 1975

406-827-4663

www.thompsonfalls.com

bennett@thompsonfalls.com

PO Box 1027 Thompson Falls, Montana 59873

CELL - 406 544 4641

THOMPSON FALLS MONTANA



Experience
Integrity
Knowledge
Aerial Photos

**Buyer's Broker or
Seller's Broker Services**

*Don't buy or sell without
someone looking out for YOU!*



2350 sq' home + 864 sq' guest
home or use as rental income on **4 lovely acres**. Very nice neighborhood just 1 mi N of TF but very rural. Terms!! #1489 \$349,000



120 ac very private & secluded
just N of TF w/ **newer 3960 sq ft cedar-sided home**. 3000 sq ft shop, 2-car garage, barn, studio, + more! Timber. #1491 \$975,000



Wonderful home, 3600 sf on 1.29 acres IN TF! 3 bd, 2 bath. Attached garages/shop. Daylite bsmnt all finished. Knotty pine in, Hardiplank out. #1504 \$369,000



2 ac & beautiful home with great mntn & valley views!! Up out of Plains. 3,000 sq' w/daylite bsmnt 3 bd, 2.5 ba. Decks. Rockwork. 3-car garage. #1500 \$259,000



4, 6, or 10 ac. Out the Blue Slide. Just W of TF. Meadow & timber mix. All new paved road. South exposure. Possible terms. NF close. #1447 \$44,900 - \$68,900



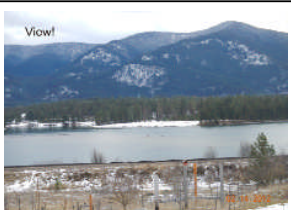
10 acres w 780 sf log home. All set up for horses. Also cabin, shed, insulated shop. Fruit trees & garden. Rail fence & cross fenced. Unique! #1468 \$295,000



NEED CASH??

We buy Real Estate Contracts.

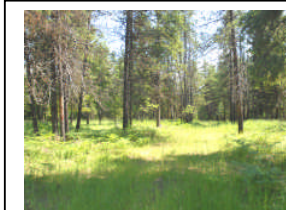
Sell yours for **CASH** today!



Home on 3/4 acre in T Falls with MILLION DOLLAR views of TF Reservoir! 2300 sq' - 3 bd; 1 bath; City water; Decks; Greenhouse; Garage #1505 \$124,500



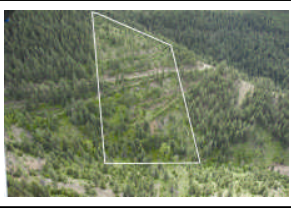
20 timbered ac up Marten Crk. Trout Creek. 3 sides border NF. **Marten Creek thru.** Elk, deer. Hunt/fish. NO covenants. Possible owner terms. #1475 \$249,000



10 timbered ac, some meadow. Close to Thompson Falls! Dead end road, views, power, septic approval. It has it all. Light covenants. #1454 \$129,500



Four 4-5 ac lots near Trout Creek. New dead-end road, timber and meadow. Light covenants. Views! Great bldg sites. Terms. Possible trade. #1459 \$78,000 to 95,000



16 acres w/lots of trees, views, gd road, yr-rnd Antimony Creek thru property. Lots wildlife & borders Nat'l Forest. No power. Great cabin site. Terms! #1486 \$87,000



2.3 acres -188' RIVER FRNTG on TF Reservoir. Low bank. Boat/seaplane ramp in! 1400sq' hangar/garage. Ready for your new home! #1495 \$310,000



40 acres at end of road near Trout Creek. Lots of privacy. Timbered. Some great mntn view sites. Perc done. Only \$3,875/ac. #1502 \$155,000



STRATFORD HOMES - sample Cape Cod above. Stick-built to your floor plan or our floor plan. Come in and talk to us about what you'd like.

